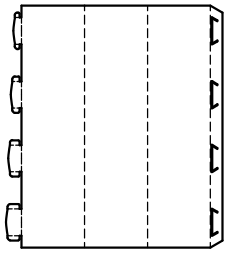
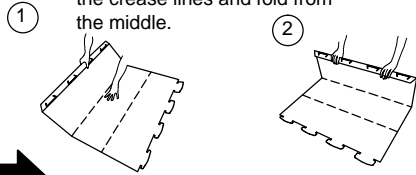


# Bollard Wrap - Instruction Sheet

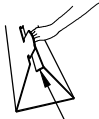


— Cut Edges  
- - - Crease Lines

**Folding**  
Place hand near the centre of the crease lines and fold from the middle.

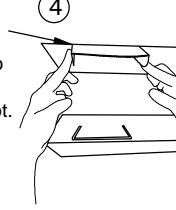


**3**  
Pull the unit together and ensure the slot tab is folded inside the unit.

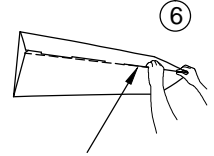
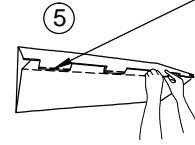


**Joining**  
When inserting the tabs, start with the largest tab and work down to the smallest.

**4**  
Fold insert tabs to match the slot.



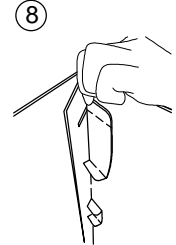
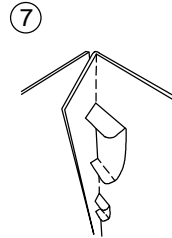
**5**  
Push the tab into the slot up to the printed dotted line.



Once the tabs are all partially pushed up to the dotted lines, pinch together until tabs are fully engaged.

**Final Step**

For best join, unfold tabs as shown below.



**Assembled Unit**

