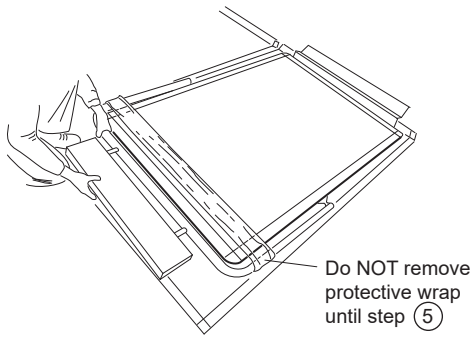
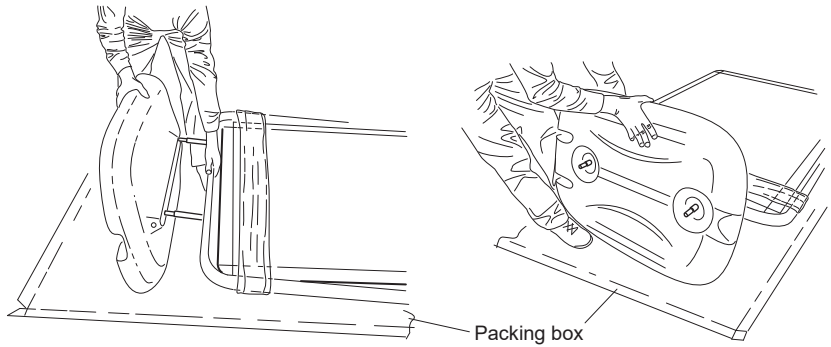


# CYCLONE 2 - Assembly

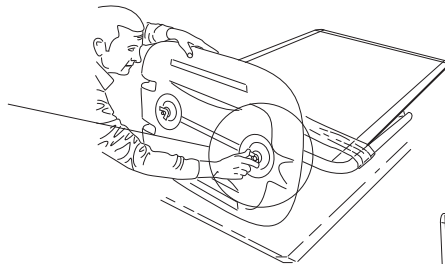
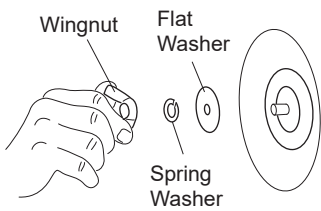
- ① Use the packing box to rest the frame on during assembly. Remove the packaging from the spigots - Do NOT remove the protective wrap until step ⑤



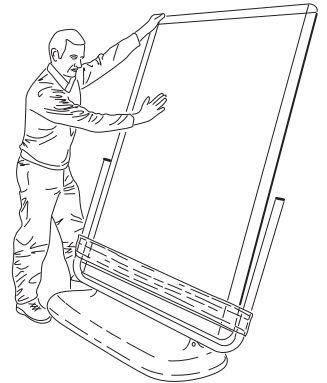
- ② Offer the base to the frame, aligning the spigots of the frame with the holes in the base.



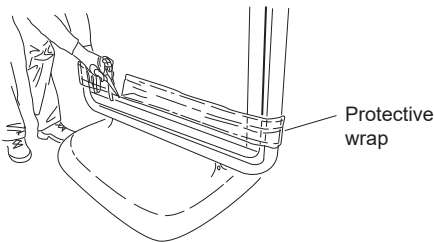
- ③ Locate large flat washers, small spring washers & wingnuts onto spigots. NB Both wingnuts MUST be fully tightened.



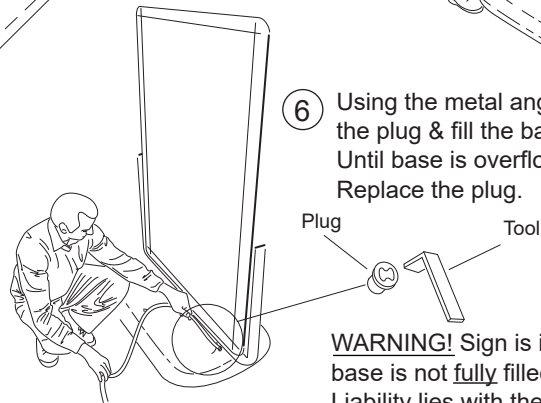
- ④ Carefully guide the assembled sign upright.



- ⑤ Cut through the & discard the protective wrap.



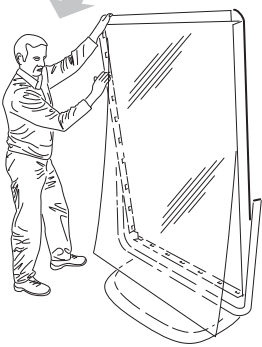
- ⑥ Using the metal angle tool, remove the plug & fill the base with water. Until base is overflowing (Approx 7 mins). Replace the plug.



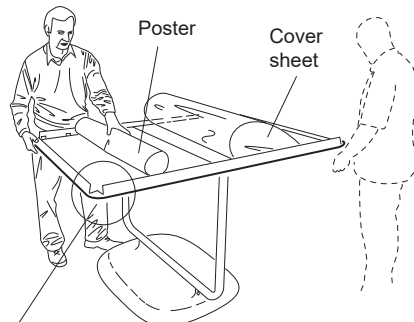
**WARNING!** Sign is at risk of falling if base is not fully filled. Liability lies with the user.

## Poster Insertion/Change

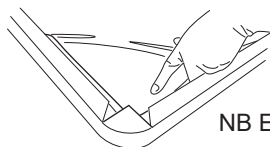
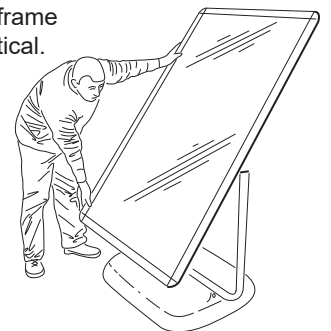
- ① Open the bottom & side trims. Tip the frame forward to release the cover sheet from the bottom corners.



- ② Rotate the frame to level. Pull back the cover sheet. Slide the poster into position. Two person operation recommended.



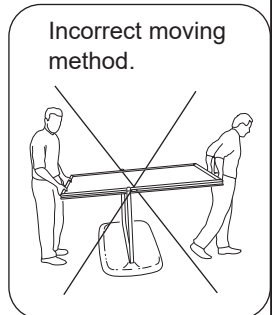
- ③ Rotate the frame back to vertical.



NB Ensure poster & cover sheet locate under corners before closing the trim.



- ④ To avoid damage to the underside of the base we recommend that a trolley is used to move the sign to your desired location.



Incorrect moving method.