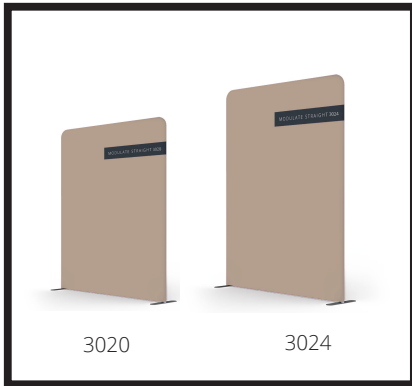


Modulate 3020 and 3024 (Straight)

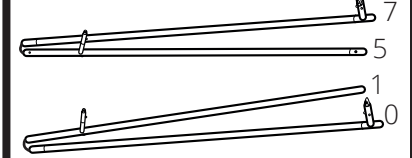
April 2024



PARTS (NOT TO SCALE)

3020 Straight

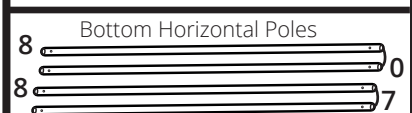
Vertical Poles



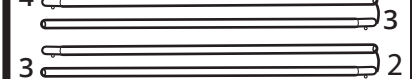
Vertical Centre Poles



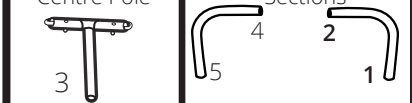
Horizontal Support Poles



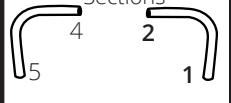
Top Horizontal Poles



Vertical Centre Pole



Radius Top Corner Sections



Feet



Gloves



Optional Half Feet



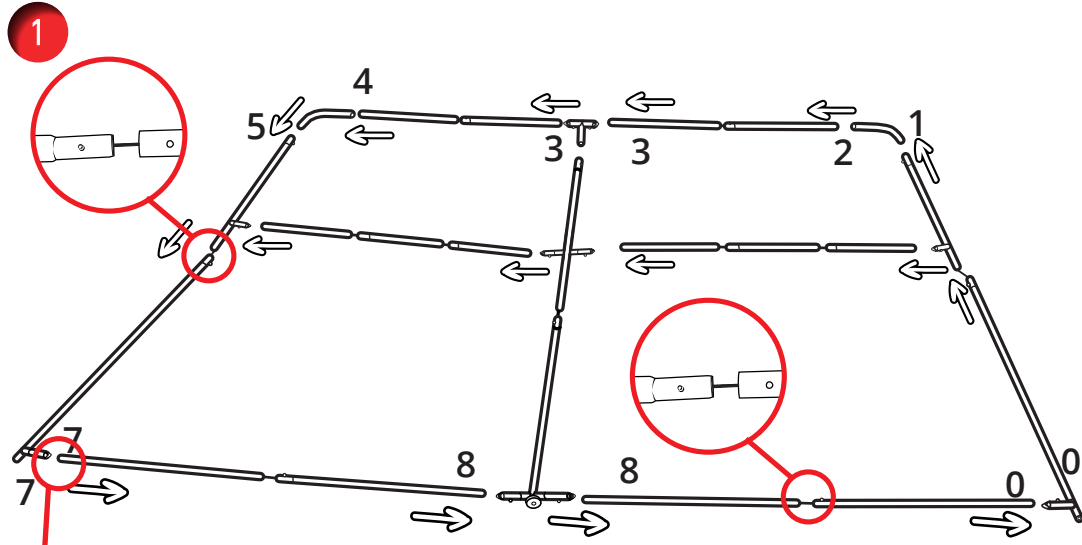
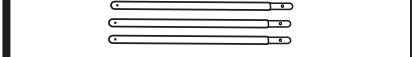
Optional Straight corner



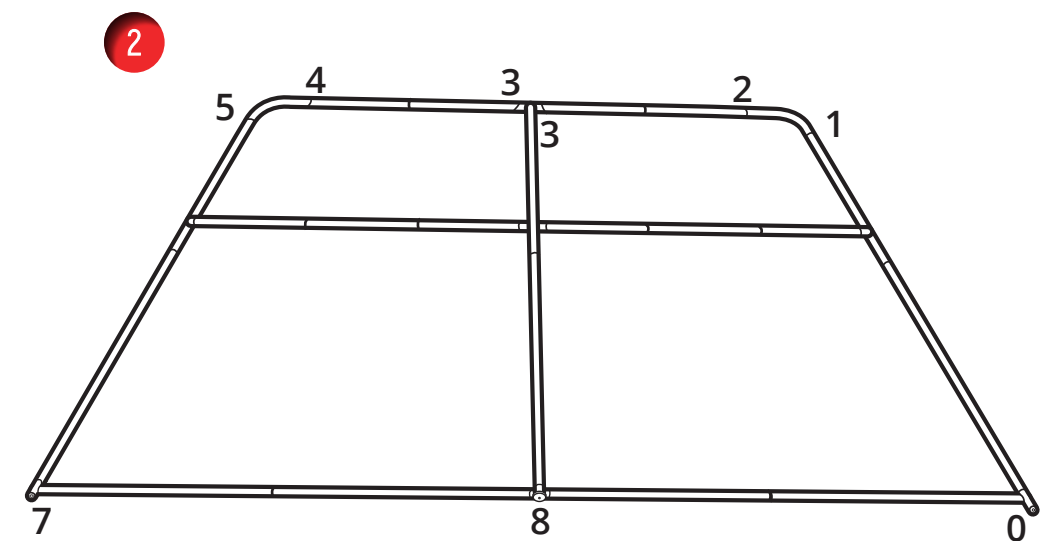
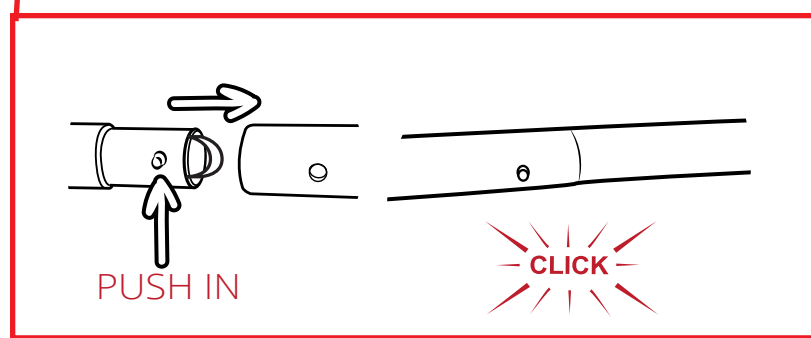
NOT SUPPLIED WITH KIT AND THEY ARE SOLD SEPARATELY

3024 Straight

Optional Extension poles (x3)



Complete the assembly with the upper horizontal sections to make it easier to fit the internal horizontal support poles.

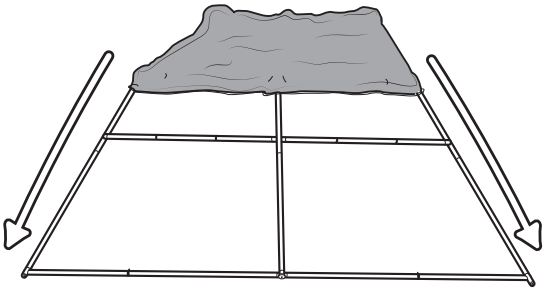


Modulate 3020 and 3024 (Straight)

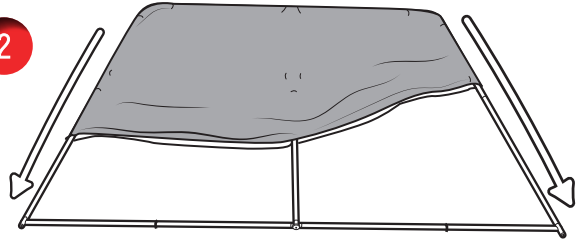
April 2024



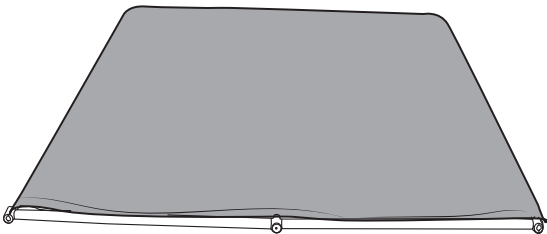
1



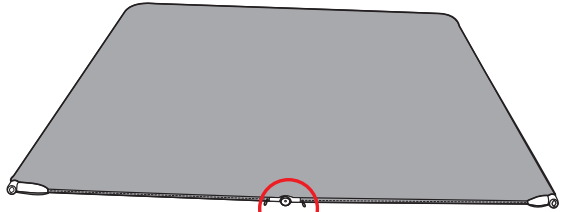
2



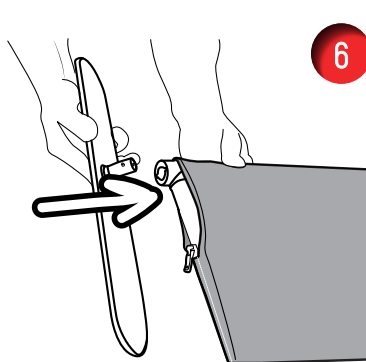
3



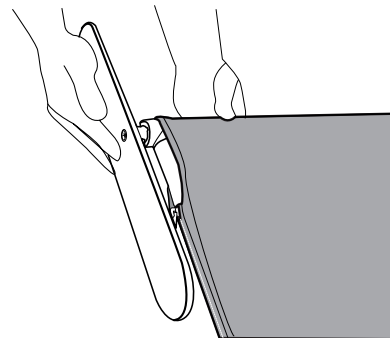
4



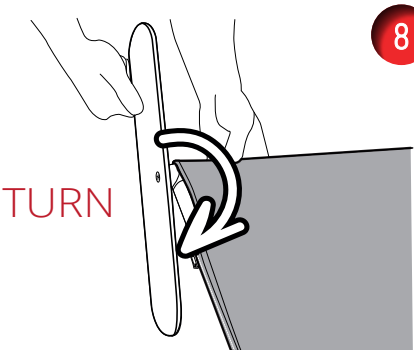
5



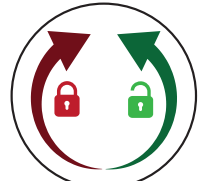
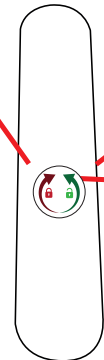
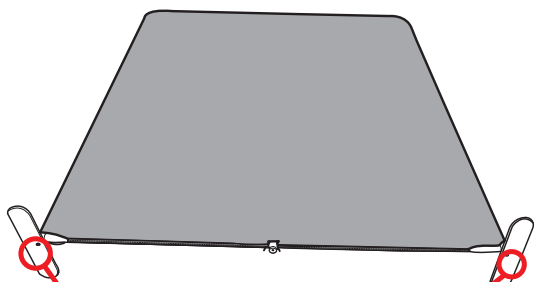
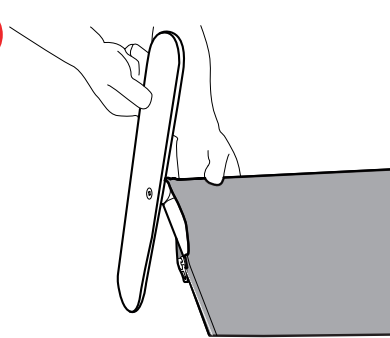
6



7



8



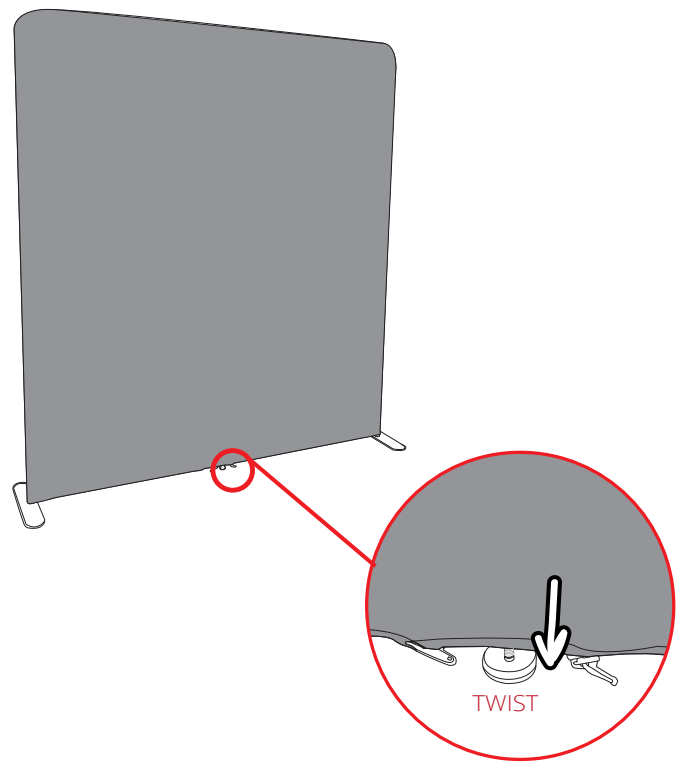
Turn clockwise to lock foot in position
Turn anti-clockwise to unlock foot

NOTE: Sticker on base of foot shows the directions for locking/unlocking foot

NOTE: TWO POSITIONS FOR THE FEET (SEE OPTION 1 FOR SECOND POSITION)

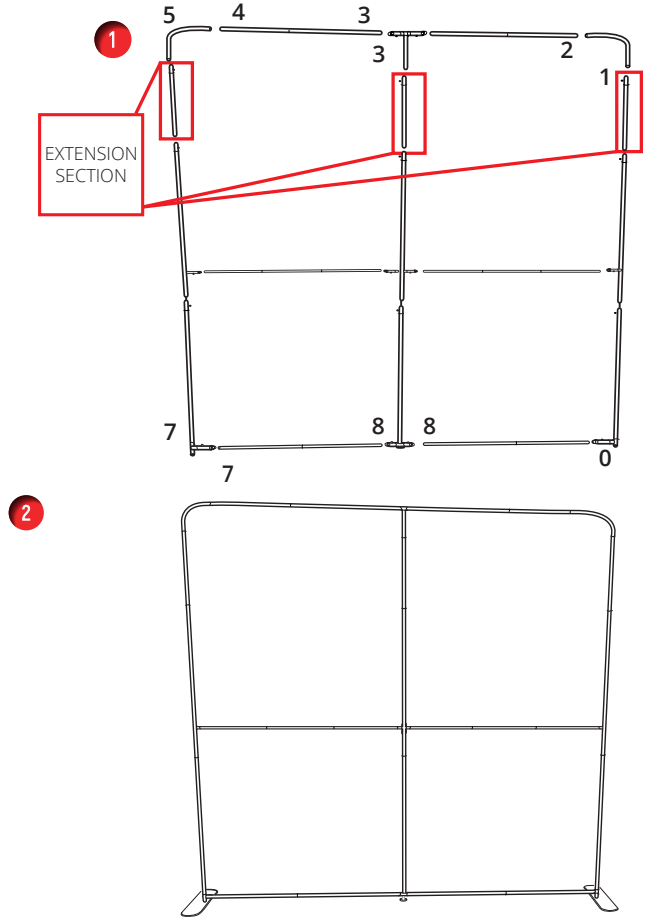


8



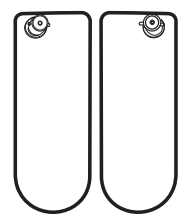
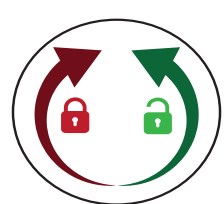
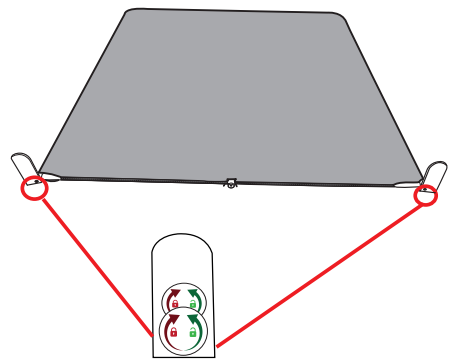
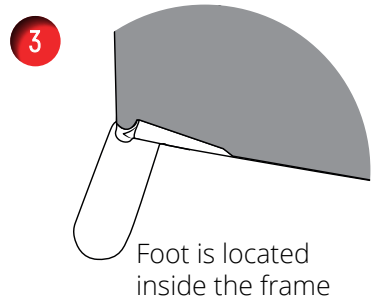
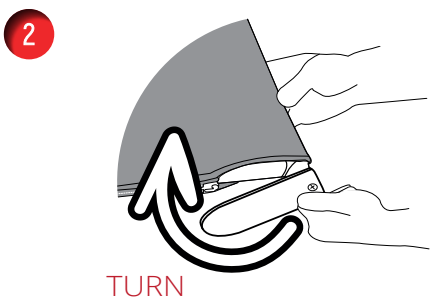
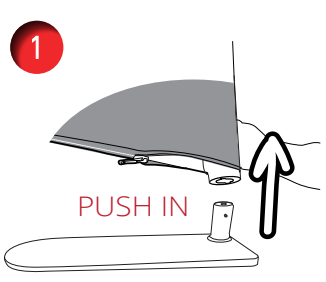
NOTE: Adjustable feet can be used to level frame

OPTIONAL (EXTENSION KIT) NOTE: EXTENSION SECTION SUPPLIED WITH 3824 FRAME



OPTIONAL (HALF FEET)

OPTION 1 NOTE: HALF FEET CAN BE POSITIONED ONTO THE FRAME TWO DIFFERENT WAYS



Turn clockwise to lock foot in position
Turn anti-clockwise to unlock foot

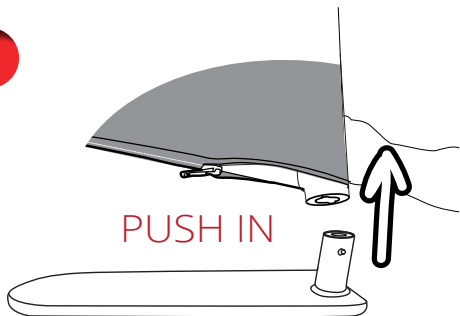
Modulate 3020 and 3024 (Straight)

April 2024

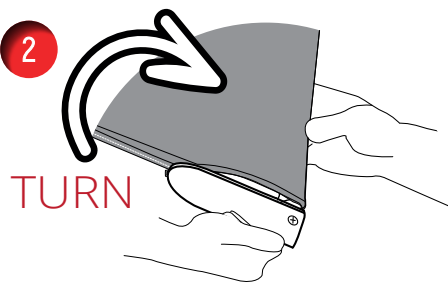


OPTION 2

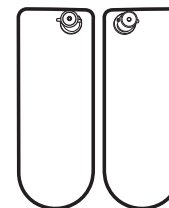
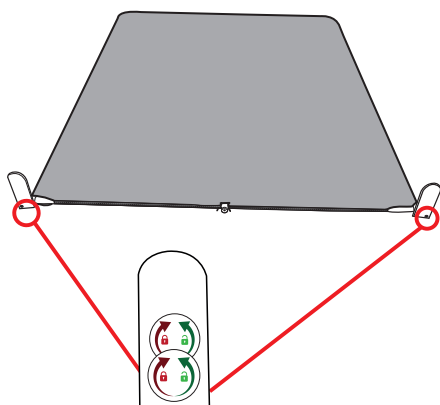
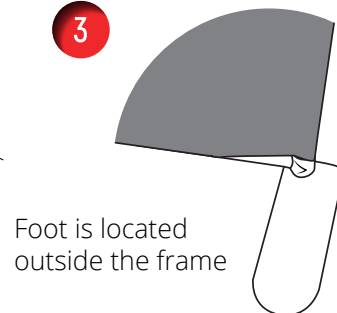
1



2



3

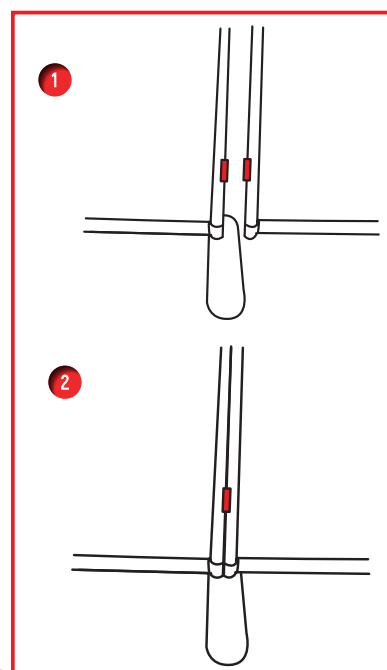
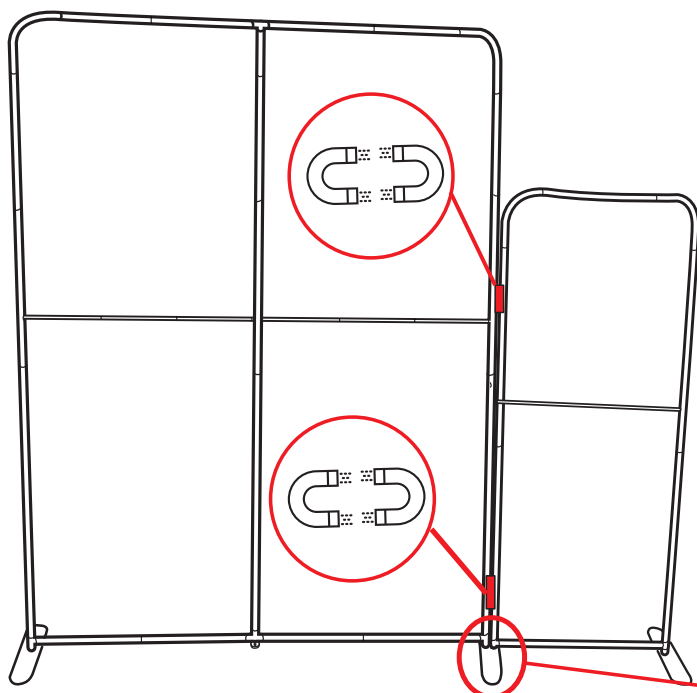


Turn clockwise to lock foot in position
Turn anti-clockwise to unlock foot



CONNECTING MULTIPLE FRAMES

NOTE: SECOND FRAME (820 STRAIGHT NOT INCLUDED)



Remove one foot from second frame and align both frames on one foot

NOTE: FOLLOW OPTION 1 FOR HALF FEET TO CONNECT TWO FRAMES ON ONE FOOT

3024 (With Extension) Straight Frame and 820 Straight Frame